



TOMAX
NEWS

Issue 96
2nd September 2022



PLUS:

MARKET SUMMARY

- Ocean freight rates continue to spiral downwards on outbound China trade-lanes. The welcome news for importers looks set to continue into the traditional peak shipping season, bucking the usual trend of increasing rates. Some new recent entrants to the market, such as ALS, have helped increase capacity which has in turn led to a downturn in the supply/demand curve in favour of lower rates.
- Did you know that Tomax offers domestic transport services and are not just an international freight forwarder? Tomax can assist you with your cargo movements all over the country, whether by road, rail, air or sea. We are already assisting many clients to streamline their transport operations and achieve both service improvements and cost reductions. If you'd like to know more about the domestic transport services that the Tomax Group offers please contact our sales team on 1300 186 629.
- It's BMSB season! Again! Already! If you are asking, "What on earth is BMSB?" then we highly recommend that you read page 4 in this newsletter and speak to our customs team if you are importing cargo from Europe or the USA.

TARIFF CONCESSIONS GAZETTE (TC)

Tariff Concession Orders (TCOs) are an Australian Government revenue concession that exists where there are no known Australian manufacturers of goods that are substitutable for imported goods. The weekly Tomax Client Newsletter will contain a link to the latest Gazette document so that you can stay updated.

[CLICK TO VIEW LATEST GAZETTE](#)

ECP TRIAL BACKED BY VICTORIAN GOVERNMENT

Container Transport Alliance Australia's (CTAA) initiative proposing enhanced productivity in the truck arrival interface in Melbourne's Empty Container Parks (ECPs) has received support from the Victorian government.

On Wednesday 24th August, Melissa Horne, Victorian Minister for Ports and Freight launched the Melbourne ECP Paperless Truck Entry Trial Initiative during the Ministerial Breakfast as part of MEGATRANS2022 and at a Shipping Australia function on Thursday August 25th.

Neil Chambers, CTAA Director says, "there are several Melbourne ECPs who have implemented camera technology combined with process changes to allow them to identify truck arrivals remotely and match those trucks against arrival notifications visible through the technology platforms they use - i.e., either Containerchain or 1-Stop Modal. At these 'benchmark' ECPs, trucks can be 'green-laned' for direct allocation to the fork area for loading or unloading of empty containers. These ECPs achieve best practice truck turnaround times (TTT) and hassle-free gate entry processes."

Manual gate entry procedures and low or inconsistent use of electronic delivery orders in ECP booking platforms place an administrative burden on transport operators, increasing the risk of double-handling containers as well as TTT.

The CTAA conservatively estimated that by improving TTT at empty container parks by just 10 minutes, this would save the container transport industry up to \$20 million per year in truck running costs.

With support from Freight Victoria (Victorian Department of Transport) and the Minister's office, the CTAA will be working collaboratively with ECPs, shipping lines and container road transport operators, to measure TTT at all ECPs in Melbourne and to boost the implementation of process changes and technology adoption to fulfil the vision of truck entry becoming truly 'paperless.'

Neil added, "unfortunately, there are other ECPs where these step changes in gate-in productivity have not been implemented, meaning that truck drivers must exit the truck cab to speak to ECP operations staff about their arrival. This wastes valuable time and raises added concerns about the occupational health and safety implications of truck drivers walking around within the facility, mixing with trucks and other equipment. The majority of the foreign container shipping lines provide this EDI exchange most of the time. However, there are some prominent shipping lines that do not, and this is of ongoing concern."



BIOSECURITY ALERTS & CHANGES THIS WEEK

Please note the Biosecurity update for this week:

BROWN MARMORATED STINK BUG (BMSB) 2022-2023 SEASONAL MEASURES

Effective from 1 September 2022

Changes for the 2022-2023 seasonal measures for Brown marmorated stink bug (BMSB) have been introduced as of 01 September 2022.

These changes include:

- Goods arriving as air freight import pathway disabled.
- BMSB new, unused, and not field tested (NUFT) declaration option implemented in sea container import pathways for goods that can meet certain criteria.
- Updates to onshore activities and direction comments.

WHO DOES THIS NOTICE AFFECT:

Importers of target high risk goods from target risk countries, Pathway Operations Cargo – Assessment and Inspections.

FURTHER INFORMATION:

Please contact Hitchhiker Pest Policy on 1800 900 090 or email SPP@agriculture.gov.au

THIS CHANGE APPLIES TO THE FOLLOWING CASES:

- Brown marmorated stink bug (BMSB) hitchhiker pests.



LARGEST ICE SEIZURE RECORDED IN AUSTRALIA

Australian Federal Police and border authorities have executed a record-breaking drug bust following the discovery of a tonne of methamphetamine found sealed inside shipping containers arriving at Port Botany.

The latest seizure of the drug was linked to the staggering 748 kilograms of methamphetamine smuggled in a sea freight consignment last week. Totalling more than 1800 kilograms of “ice” detected, this is the largest seizure of the drug in Australian history, with an estimated street value of over \$1.6 billion.

The most recent shipment was concealed within marble stone, utilising the same method to conceal the first load, which was spread across multiple containers arriving in Port Botany last week. The earlier consignment arrived last month, which saw three men aged 24, 26 and 34 arrested. Investigations were carried out under Strike Force Chellington, organised by detectives attached to the State Crime Command’s Drug and Firearms Squad.

State Crime Command acting director of operations, Detective Chief Superintendent John Watson, advised that police are continuing to investigate activities of the syndicate with further arrests not being ruled out yet. He said, “we will allege this syndicate was extremely well connected in several corners of the globe. The fact that we have seized a further tonne – potentially ten million

street deals – of this insidious drug just shows how little regard these types of groups have for the wellbeing of the community. Combined with the seizure from earlier this month, NSW Police and Australian Border Force officers have stopped more than 1.8 tonnes of ice at the border – this is now the largest ice bust in Australian history. It’s once again proof that through the collaboration of all our partner law enforcement agencies, we will continue to stop this dangerous drug from hitting our streets.”

Erin Dale, ABF Assistant Commissioner East, said the detections exemplify the capability and diligence of ABF officers in protecting the Australian community. Erin Dale stated, “our officers are highly trained and continue to demonstrate their skills when it comes to detecting the importation of illicit drugs, no matter what method of concealment the organised crime groups use. The audacity of these individuals to think they could import such vast quantities of harmful drugs into Australia is astounding. Let’s be clear: this is the largest seizure of methamphetamine at the Australian border and therefore a massive blow to organised criminals.”

Williams, A. (2022). Record \$1.6 billion drug bust at Port Botany. Retrieved from <https://www.thedcn.com.au/news/law-regulation-trade/record-1-6-billion-drug-bust-at-port-botany/> on 2nd September, 2022.



MAERSK TO BUILD ITS FIRST GREEN WAREHOUSE

Maersk has recently announced it will be constructing a low-emissions contract logistics warehouse in Denmark, the first of its kind for the company.

Under a partnership with Danish logistics hub Taulov Dry Port, the warehouse will be constructed with an anticipated zero direct emissions from operations. The new facility is scheduled to become operational in 2024.

Birna Odefors, area managing director, Nordeics at A.P. Moller – Maersk, said the company was pleased to announce its first green contract logistics warehouse. Ms Odefors said, “many of our customers are looking for long-term partners that have such capabilities to reduce their entire climate footprint...the typical customer needs in the fields of contract logistics are to support their inventory control, cost optimisation, extended visibility, speed to market and a consistent, sustainable flow of goods to reinforce their supply chain resilience.”

Williams, A. (2022). MAERSK TO BUILD FIRST-OF-ITS-KIND GREEN WAREHOUSE. Retrieved from <https://www.thedcn.com.au/news/environment/maersk-to-build-first-of-its-kind-green-warehouse/> on 2nd September, 2022.

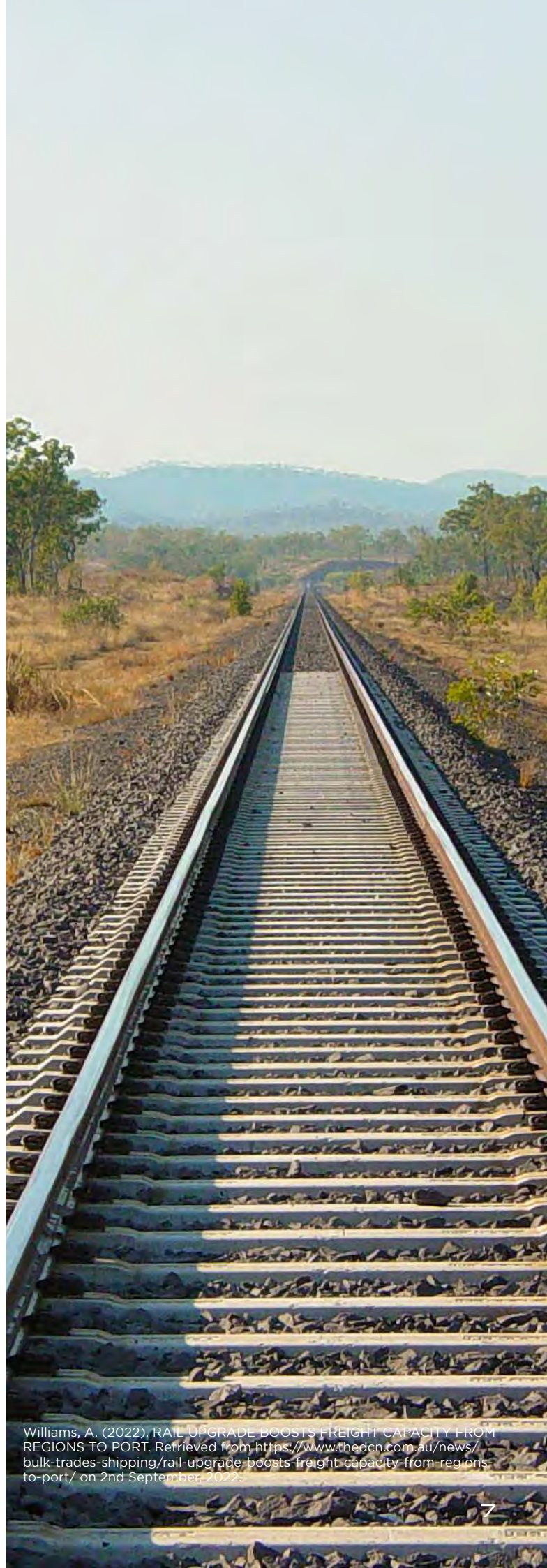
VIC RAIL UPGRADE BOOSTS CAPACITY

Following upgrades to the rail freight lines in Victoria, the tonnage capacity at four grain terminals has significantly increased, strengthening rail access to the Port of Melbourne. Upgrade works took place at the Shepparton-Tocumwal rail line, aiming to increase its load capacity from 19 to 20 tonne axle-load, with more capacity expected to follow. Currently, grain trains who use the line can increase their loads by an additional 160 tonnes of grain. A typical 650-metre-long loaded train carries more than \$1.3 million worth of grain and equates to 50 loaded semi-trailers.

Between July 2021 and April this year, one million tonnes of grain valued at \$600 million from 29 grain sites was moved to Port of Melbourne by more than 530 bulk grain trains, according to the Victorian government. Paul Scurrah, Pacific National CEO, deemed the Shepparton-Tocumwal rail line as a vital link in Victoria's supply chain, stating, "it ensures Pacific National can continue to move large grain volumes by trains to the Port of Melbourne." Paul advised that transporting more bulk grain by trains will reduce the number of trucks on country roads, improving safety and reducing emissions in regional transport networks. He added, "as the largest hauler of grain and agricultural products, regional exports, and bulk goods on the eastern seaboard, Pacific National ... has moved more than 200,000 tonnes of grain on this line over the past 12 months which is equivalent to removing more than 3700 trucks off Victoria's road network."

Melissa Horne, minister for ports and freight, said the state government is heavily investing in rail lines across north and north-west Victoria, specifically those which handle grain. She said, "our freight network contributes \$21 billion to our economy each year and employs 260,000 Victorians, connecting our farmers and producers to the rest of Australia and the world."

The state government said the Victorian Budget 2022/23 would deliver a further \$181 million for critical maintenance works on the regional rail freight network, in order to improve its competitiveness and support the growing freight task in Victoria.



Williams, A. (2022). RAIL UPGRADE BOOSTS FREIGHT CAPACITY FROM REGIONS TO PORT. Retrieved from <https://www.thedcn.com.au/news/bulk-trades-shipping/rail-upgrade-boosts-freight-capacity-from-regions-to-port/> on 2nd September, 2022.

STAFF SPOTLIGHT

CHRIS MAYHEW

WAREHOUSE MANAGER - PERTH
TOMAX LOGISTICS WAREHOUSING

What do you do at Tomax?

I am the new Warehouse Manager here at Tomax Perth.

What are your hobbies/interests?

I love watching F1 and Football (Soccer). I played football myself up until a couple of years ago and have been playing organised football for over forty years. I also enjoy taking my grandson fishing.

Are you a traveller? Which destinations have you been to or wish to go to?

I just returned from a 'Drive-about' - I drove up the coast of WA into NT to Darwin, then came straight down Stuart Highway to Alice Springs (breaking down there). I had to wait 10 days for a mechanic and a new fuel pump but during this time, I was able to walk around Uluru. I drove 12,000km in 30 days, minus the 10 in Alice, so 20 days really!

On my bucket list is a riverboat cruise down the Nile in Egypt, and to drive down the east coast of Australia.

The hardest obstacle you overcame?

The hardest obstacle...wow, probably, that during my last employment I oversaw a move to a new warehouse in one weekend and continue trading, we did it of course, but not without a few hiccups that we eventually overcame.



What is something you dislike the taste of?

Beetroot...absolutely ghastly, and turns everything on your plate that same colour.

If you could time travel, which year would you revisit?

1981. I became a teenager. Loved the music, the fashion, that society was becoming more tolerant of the minority groups, more freedoms, more choices from previous years and my favourite football team, Tottenham Hotspur won the cup.

A life motto you live by?

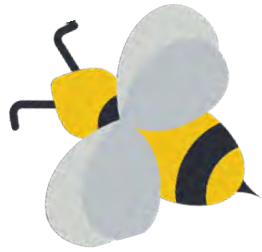
A life motto I like very much is both baffling, but paradoxically quite true..."There are none so blind as those that won't listen".

Settle the debate! Does tomato sauce belong in the fridge or pantry?

Being a pom, I should like to go on record to say that it is tomato KETCHUP not sauce, and it belongs in the pantry.



SPRING FRIDAY FUNNIES



We hope these jokes will get the laughs blooming as we approach our first weekend in spring!

When is it impossible to plant flowers?

When you haven't botany.

Why couldn't the little flower ride a bike?

It didn't have any petals.

Did you hear about the flower who went on a date with another flower?

It's a budding romance.

What did the tree say during springtime?

"Well, this is a re-leaf!"

How does the sun listen to music?

On the ray-dio.

What season is it best to go on a trampoline?

Spring time.

What's the most popular type of pickle for spring?

Daffo-dills.

What did the sprout say when he saw his friend?

Hey Bud!

I heard you bought a new bed! Did you get a spring mattress?

Oh no, I use it all year.



Australian HQ
19/202 Ferntree Gully Rd
Clayton VIC 3168

tomax.com.au
1300 186 629
03 9544 4227

